



 **Trijicon**  
**Q-LOC™ Technology**  
Mount Installation Instructions

 **WARNING:**

DO NOT tighten the center torx screw. **(FIGURE A)**

Use ONLY the outside Acorn or 1/2" Hex nut. **(FIGURE B)**

**FIGURE A**



Center Torx Screw



Center Torx Screw

**FIGURE B**



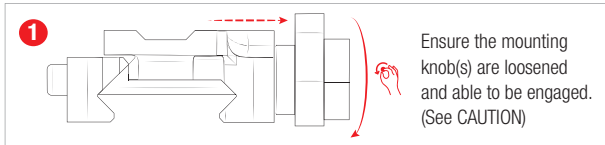
Acorn Knob



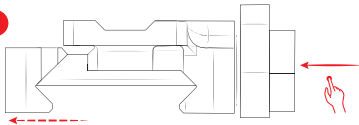
Hex Knob

**!** **CAUTION:**

Do not attempt to completely remove the knob. Doing so may damage the mount and void your warranty.

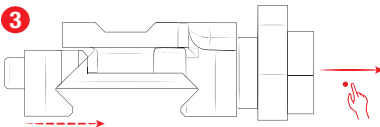


2



Depress knob(s) and place mount on rail.

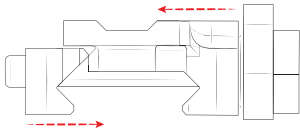
3



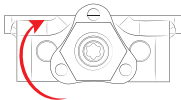
Release knob(s) to securely engage on rail.

» Spring loaded retention will guarantee 14-16 in./lbs. of pressure on rail without tightening.

4



Hand tighten knob(s), or tighten to 30-38 in./lbs. using the 1/2" Hex nut. (See WARNING)



Side View of "Hex Knob"



Side View of "Acorn Knob"



**[Trijicon.com/Q-LOC](https://www.trijicon.com/Q-LOC)**

©2023 Trijicon, Inc. | 49385 Shafer Ave. | Wixom, Michigan 48393-0059 | Phone: 1-248-960-7700 | [info@trijicon.com](mailto:info@trijicon.com)  
Specifications subject to change without notice. | PML6058-1 Rev(2) 0523